

FRICKE

Maszyny Rolnicze

FRICKE Maszyny Rolnicze Sp. z o.o. Mragowo
Ul. Przemysłowa 6
11-700 Mragowo
Tel: +48 732 106 371
Fax:

Claydon 12.5M [TSH0053]

Year of manufacture: 2023

Date: 09.03.2025

Design:

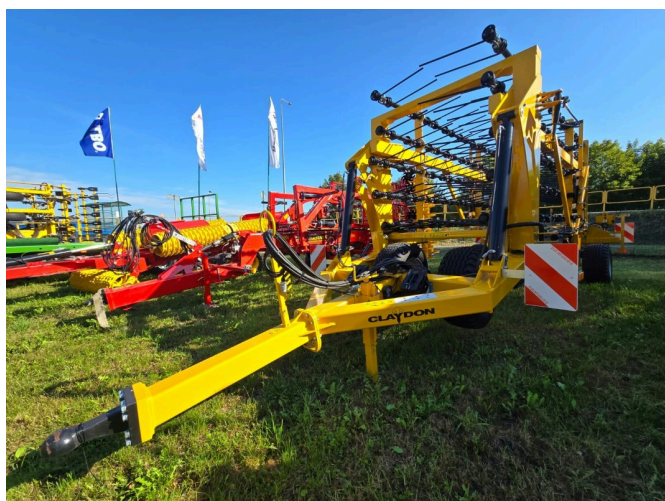
Soil cultivation crop

Category:

Harrow

197.500,⁰⁰ PLN

plus VAT 23% (242.925,⁰⁰ PLN Gross)



Equipment

Working width

12,50

Lighting

✓

State

new

Description:

claydon-carding-machine-125
m-specifications-hourly-output
-at-20-kmhha-16-minimum-po
wer-requirementhp-250-forwa
rd-speed-kmh-15-25-fuel-cons
umptionlha-2-road-transport-w
idthm-260-road-transport-heig
htm-273-weight-kg-3870-tine-
pair-14-mm-optional-16-mm-1
00-hydraulically-adjustable-wh

Description:

- claydon-carding-machine-125m-specifications
- hourly-output-at-20-kmhha-16
- minimum-power-requirementhp-250
- forward-speed-kmh-15-25
- fuel-consumptionlha-2
- road-transport-widthm-260
- road-transport-heightm-273
- weight-kg-3870
- tine-pair-14-mm-optional-16-mm-100
- hydraulically-adjustable-wheel-depth
- light-boards-and-protective-guards
- suspension-system-trailed-hitch-ball
- ukad-zawieszenia-zaczepiany-kula-zaczepowa-claydon-

eel-depth-light-boards-and-protective-guards-suspension-system-trailed-hitch-ball-ukad-zawieszenia-zaczepiany-kula-zaczepowa-claydon-zgrzebo-125m-specyfikacja-wydajno-godzino • Hourly yield (at 20 km/h)(ha):* 16
 wa-przy-20-kmhha-16-minimalne-wymagania-mocykm-250 • minimalne-wymagania-mocykm-250
 0-wysoko-transportu-drogowe • Forward speed (km/h):* 15-25
 go-m-273-waga-kg-3870- • Fuel consumption (l/ha): 2
 zbw-14-mm-opcjonalnie-16- • Road transport width(m): 2,60
 m-100-hydraulicznie-regulowana-gboko-k-tablice-wietlne-i- • Road transport height (m): 2,73
 sony-ochronne-ukad-zawiesz • Weight (kg): 3,870
 nia-zaczepiany-kula-zaczepowa- • A pair of 14 mm teeth (optional 16 mm): 100
 zaczepowa- • Hydraulically adjustable wheel depth
 ✓ • Light boards and protective covers
 ✓ • ukad-zawieszzenia-zaczepiany-kula-zaczepowa-

Landing gear