

FRICKE

Maszyne Rolnicze

FRICKE Maszyne Rolnicze Sp. z o.o. Mragowo
Ul. Przemysłowa 6
11-700 Mragowo
Tel: +48 783 222 777
Fax:

John Deere R5430i [1WZ5430XPPB0110038]

Year of manufacture: 2011

Date: 23.11.2024

Design:

Fertilization + Plant Protection Technology + Care

Category:

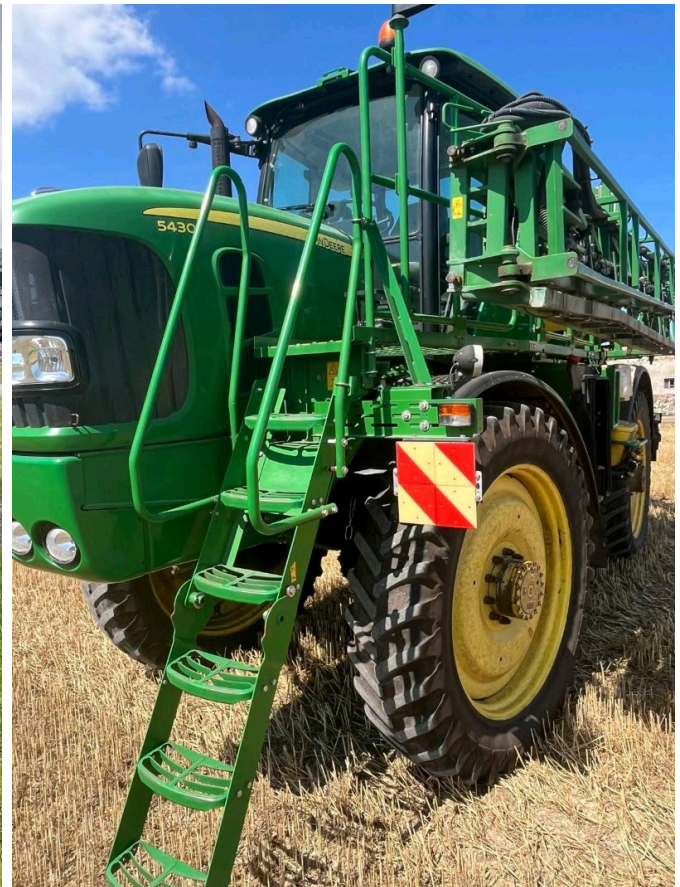
Self-propelled sprayer

Operating hours:

6019

450.000,00 zł

plus VAT 23% (553.500,00 zł Gross)



Equipment

Description:

| | | |
|-------------------------|----------|---|
| Working width | 30,00 | <ul style="list-style-type: none"> • john-deere-5430i-2011-description • full-5430i-package • high-flow-syst-560lmin • 4000l-demount-sprayer • b-coupl-for-double-pump-3 • short-stroke-steer-4ws • 380/90R46 MICHELIN 1.93-2.63 • boom-3015m-9-sect-pcs • trailer-hitch-with-road-ligh • crop-protection-shielding • calibration-container-2000ml-opis • FULL PACKAGE 5430I • HIGH FLOW SYSTEM. 560L/MIN • 4000L DEMOUNTABLE SPRAYER • CONNECTOR B FOR DOUBLE PUMP 3" • SHORT STROKE CONTROLLER. 4WS • 380/90R46 MICHELIN 1.93-2.63 • 30/15M BOOM, 9 SEC. PCS • TRAILER HITCH WITH ROAD LIGHTING • PLANT PROTECTION COVER • pojemnik-kalibracyjny-2000ml- |
| State | Used | |
| Filling quantity | 4.000,00 | |
| hydr. foldable | ✓ | |
| Pump capacity | 560,00 | |
| Section widths | 9 | |